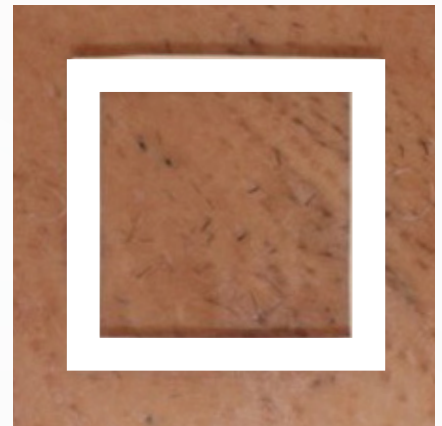
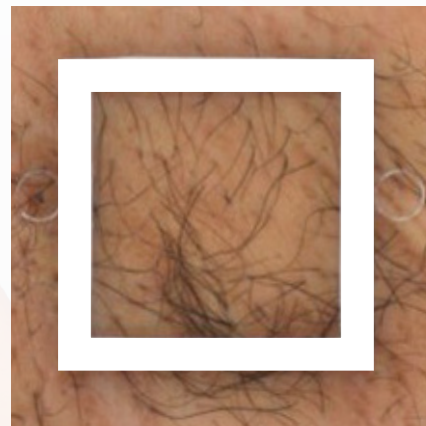


# MAX DIOLAZE *xl*

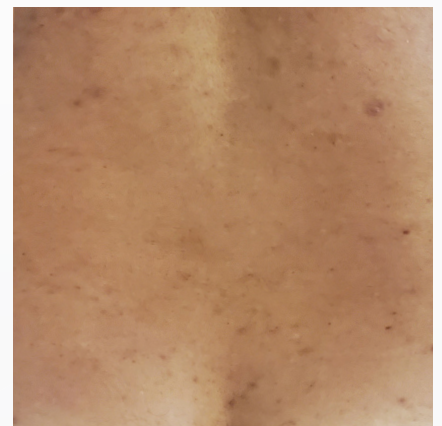
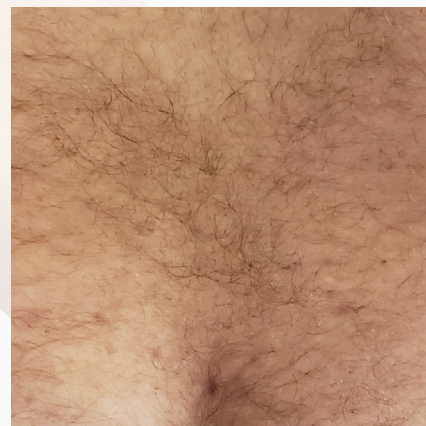
LASER HAIR REMOVAL



SALIENT



DR. D. GOLDBERG



DR. T. SHIMER



DR. J. DIAMOND

 INMODE



ENHANCED TREATMENTS. EXCEPTIONAL RESULTS.  
LOOK AS INCREDIBLE AS YOU FEEL.



VPODIOMAX0724

# FORMA

(6-8 Treatment Protocol)

FACE	\$2,000
NECK	\$1,500
FACE & NECK	\$3,000
EYES	\$600
JAWLINE SCULPTING (JOWLS / SUBMENTAL)	\$1,500
NASAL LABIAL FOLDS	\$600

# FORMA PLUS

(6-8 Treatment Protocol)

ABDOMEN	\$2,000
ARMS	\$2,000
INNER / OUTER THIGHS	\$2,000
LOWER BACK	\$1,750
KNEES	\$1,500

# MAX VASCULAZE

SMALL AREA (BUSINESS CARD)	\$550	(3)
MEDIUM AREA (1/2 SHEET OF PAPER)	\$1,100	(3)
LARGE AREA (FULL SHEET OF PAPER)	\$1,650	(3)

# MAX DIOLAZE *xl*

(6 Treatments)

CHIN	\$350
BIKINI	\$650
UPPER LIP	\$350
BACK	\$1,200
SIDE BURNS	\$350
STOMACH	\$650
NECK	\$450
CHEST	\$650
UNDERARMS	\$500
ARMS	\$1,000
LEGS	\$1,200

UNLIMITED HEAD TO TOE \$3,250

